



GV-AI GUARD

Guard Force of the Future

GV-AI Guard uses deep learning technology to learn different classifications in a video event, such as human, vehicle, license plate, hard hat, and violations. Within the classifications, users can search and filter on many different attributes, including human clothing color, and vehicle type/color, and gender. When integrated with GeoVision facial recognition devices, it helps to identify and search millions of faces in seconds.

Key Features



Intruder Detection
For Building Perimeter Monitoring



Vehicle Loitering Detection
For Traffic Management



Human Loitering Detection
Low-Traffic Area Safety



Hard Hat Detection
For Factory Safety



Mask Detection
For Building/Station Entrance



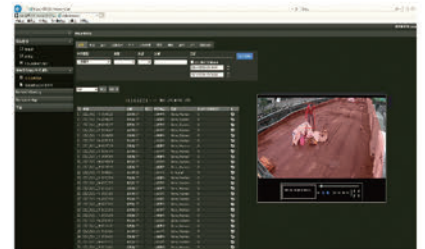
Crowd and Social
Distancing Detection



Face Search

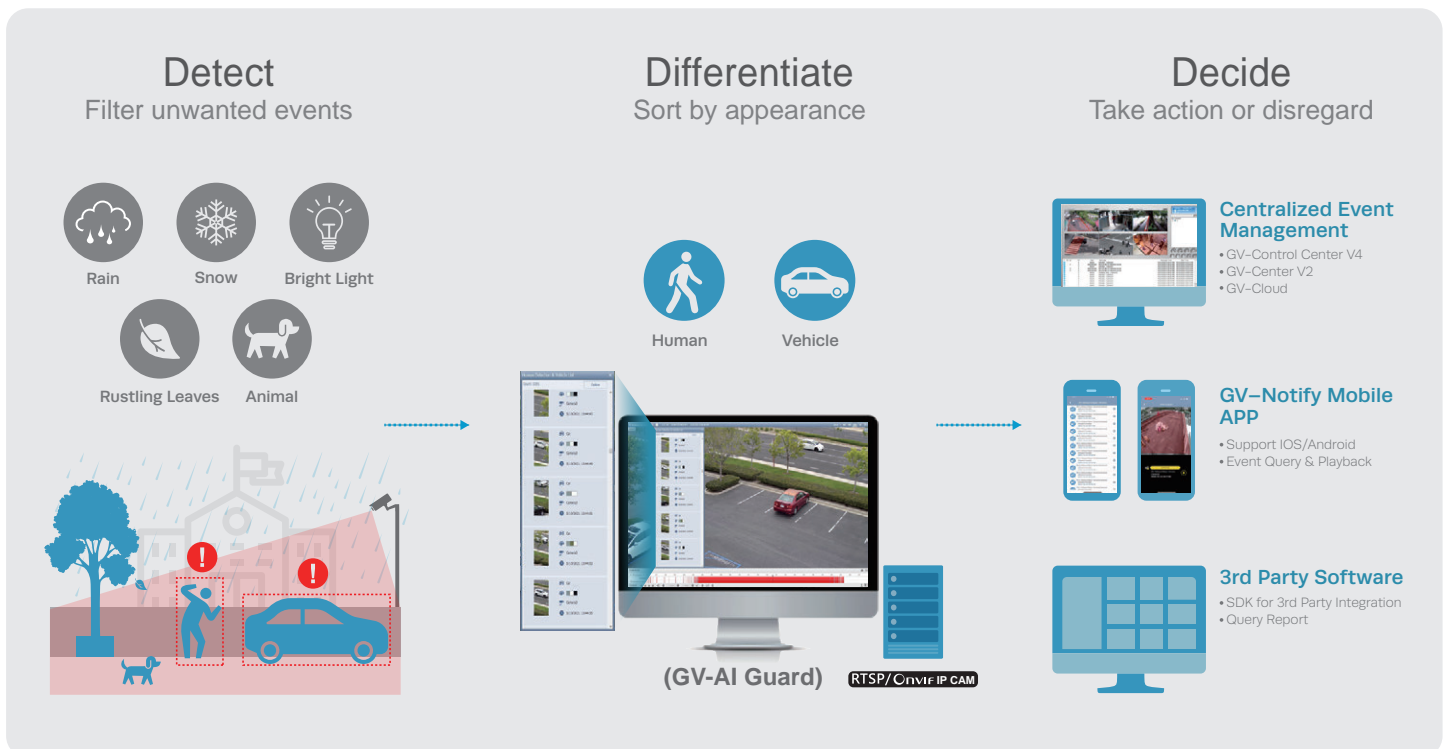


Deep Learning LPR



Web-Based Remote Event
Search and Playback

Structure



Smart Search

Users can utilize filters to quickly find recorded footage of interest. Filter options such as vehicle type/vehicle color, clothing color or event type help to speed up the video review process.



Event List

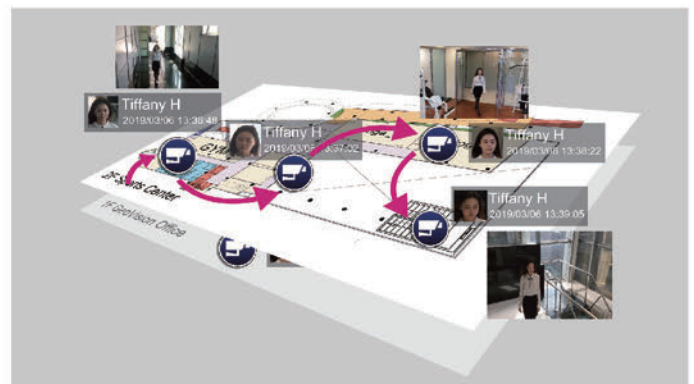


3D EMAP

All AI events can be displayed on the 3D Emap, and users can quickly spot location of the event. Also users can use face tracking function to know the path of a target person.



AI Event Popup



Face Tracking